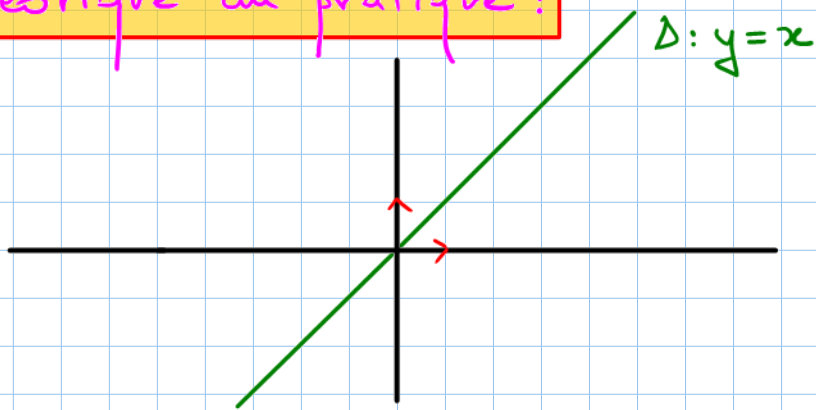


Traçage de la courbe de la fonction réciproque

✦ Ce qu'on doit savoir =

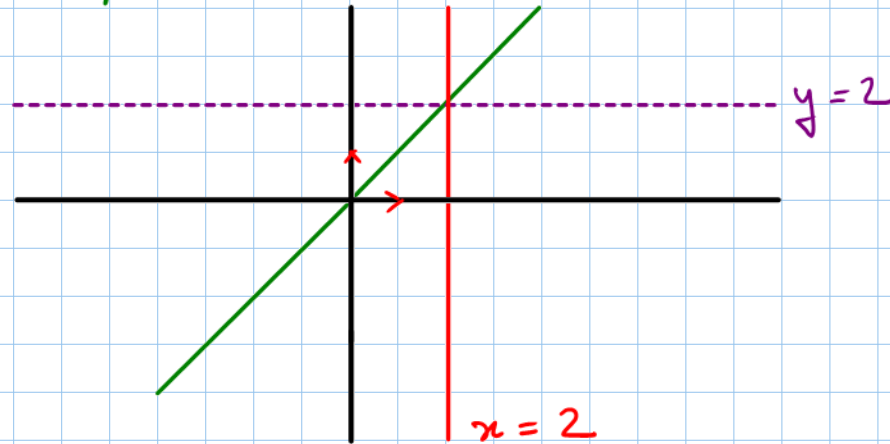
Les courbes de f et de f^{-1} sont symétriques par rapport à $\Delta: y=x$

Du théorique au pratique :

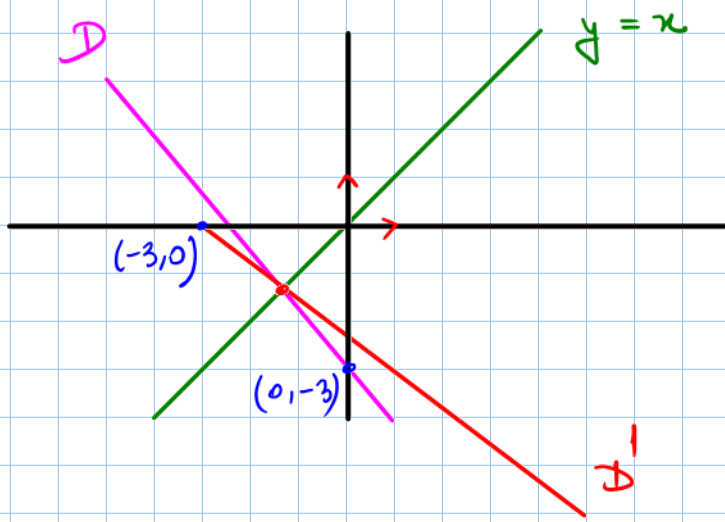


1) Symétrique des asymptotes :

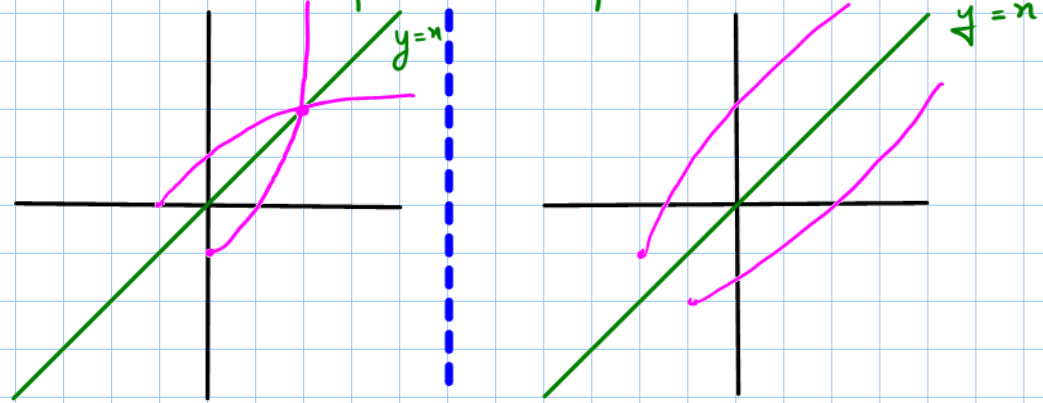
a) asymptote horizontale et verticale



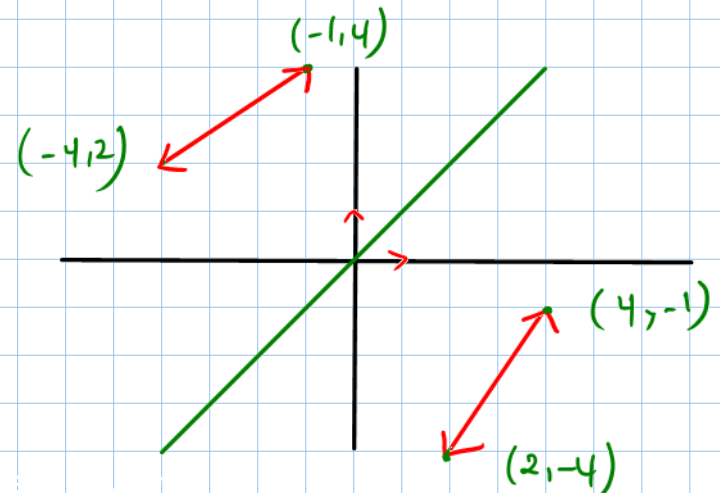
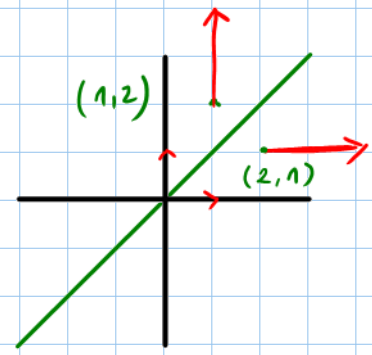
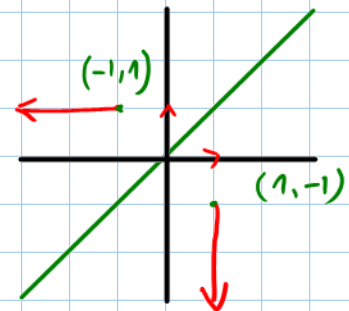
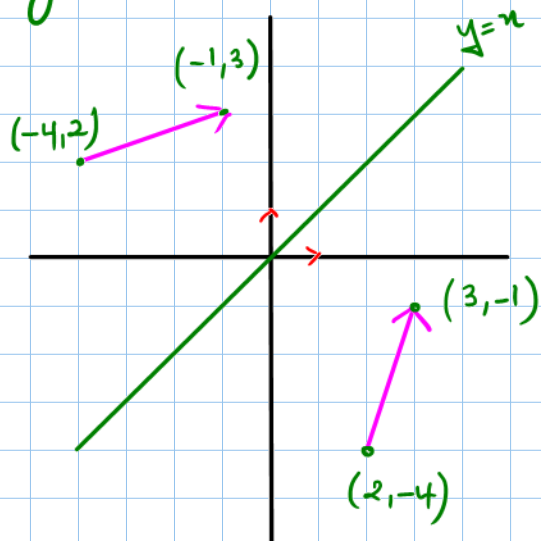
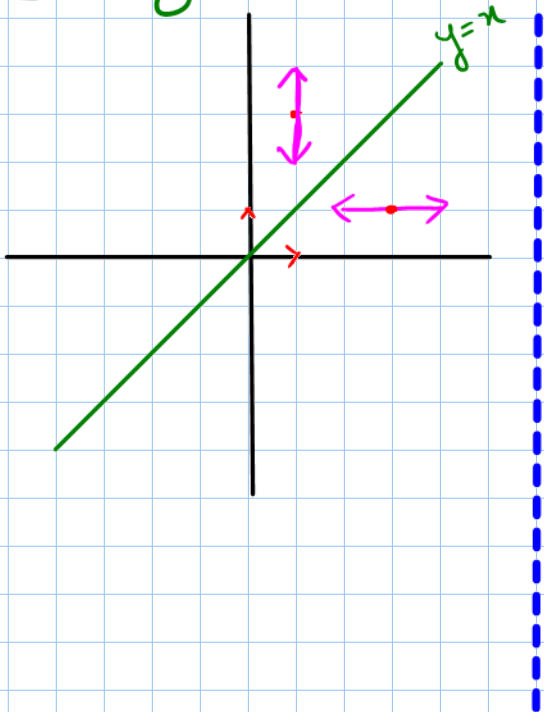
b) Asymptote oblique :



c) Branches paraboliques :



d) tangente et demi-tangente

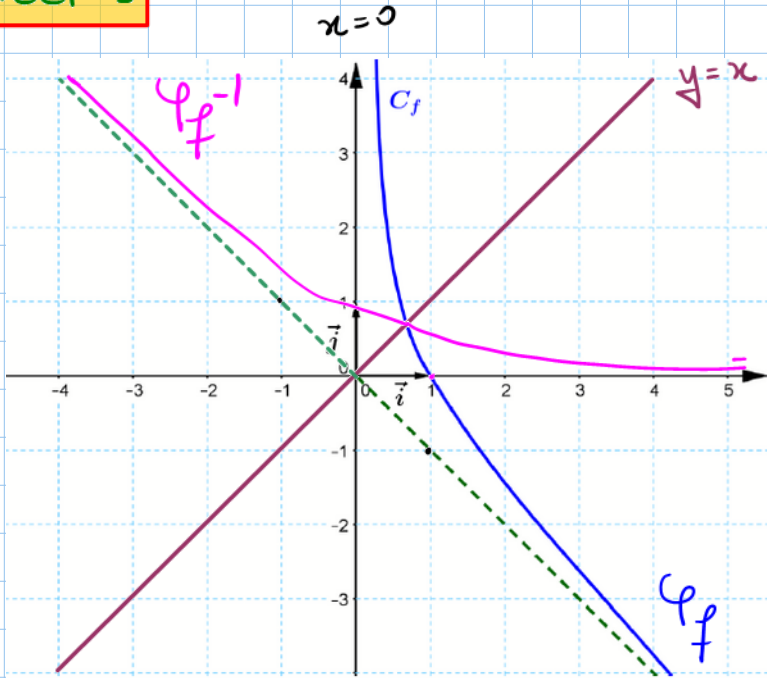


$(4, -1)$

$(2, -4)$



Cas $\sigma \neq 0$ =



$\sigma = 0$

